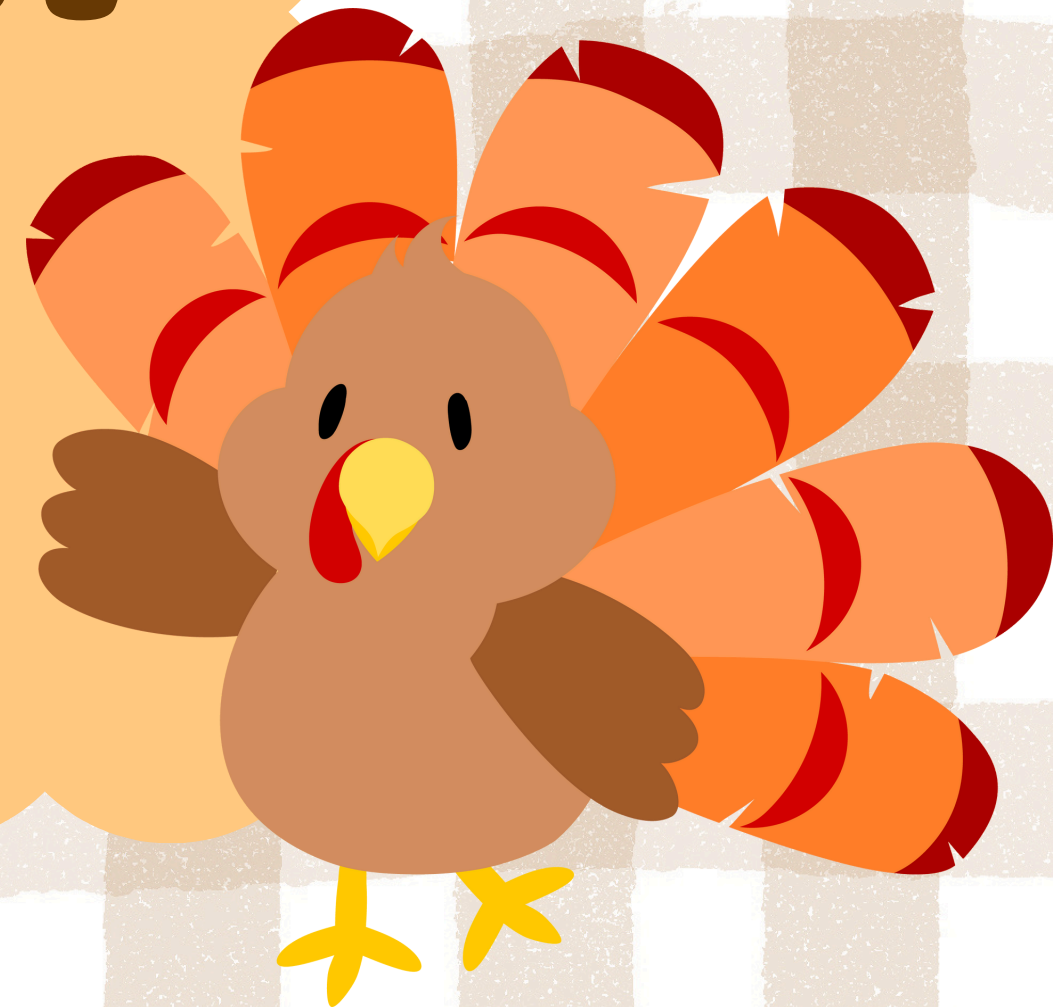




# November Meeting

11/12/2025





# NEW Freshman Liaison!

## Makayla Truong





# Future Updates

- Transition to **canvas** and **student square**
- More **centralized** system
- Official Registration is **finalized** for members
- Can't join Kiwanis system
- Can still join HSE Key Club





# UNICEF reminder

## DUE TODAY

- Turn in your UNICEF boxes with your name on it today!



## Points

- \$5 – 1pt
- \$10+ – 2pts



## Start Strong: Zambia

- Helps provide children with schooling, nutrition, and healthcare.





# Recurring Service Opportunities

## Salvation Army (seasonal & year-round)

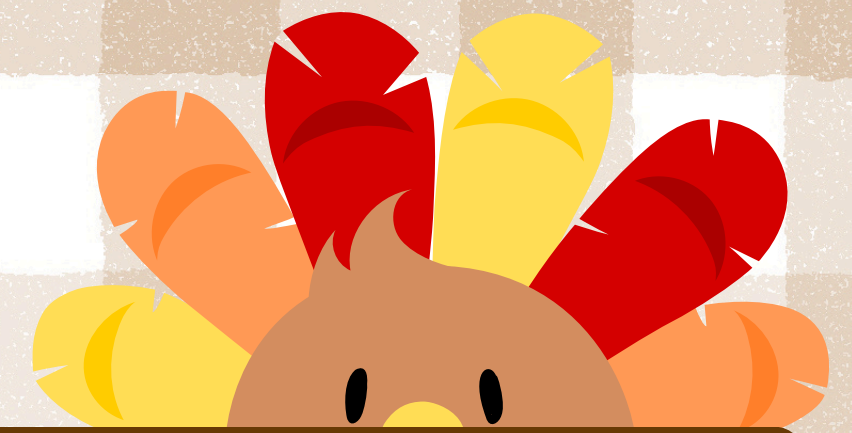
- **Women and Children's Center** (kitchen and office assistance, provide activity for residents and/or children, food pantry, etc.)
- **Food donations** - Eagle Creek Corps food pantry
- **Household items** - Harbor Light Center
- Look for other volunteering events and donation opportunities at [salvationarmyusa.org](https://salvationarmyusa.org)

## Volunteer Fishers Website

- **A Merry Prairie Holiday at Conner Prairie** - helping load and unload the ADA accessible wagon or helping at the Polar Bear Plunge Tubing Hill (Nov 25-Dec 23) \*multiple shifts available
- **City of Fishers Open Gym Volunteer** - setup, teardown, and help participants with aspects of the use of the facility \*on Sundays; multiple shifts available
- See more details or find other opportunities at [volunteerfishers.com](https://volunteerfishers.com)



# StuCo Food Drive



## What is it?

- Canned foods, toiletries, breakfast items, etc.
- Goes to **Come to Me Food Pantry** to support Hamilton County Families
- **Club competition!**
- Last day: **November 20th**



## Points

- 10 cans = 1 inside point
- 20+ cans = 2 inside points

## Where?

- Drop off the cans at Mr. Link's room (J211)



# Bake Off



## EBRP

- Raising money for Epidermolysis Bullosa Research Partnership (EBRP)
  - EB is a rare genetic disorder causing fragile skin, painful wounds
- All proceeds go to EBRP – find a cure by 2030

## Points

- **1** Inside point for coming
- Inside points for donating
  - Donate on website/in person
  - Pay to taste food (**\$1**) & vote (**\$1 = 1 vote**)
  - **\$5 = 1pt, \$10 = 2pts**
- Help set up/clean up

## Overview

- December **5th**
- Pathways A – 5PM
- Room **A122** – Mrs. Self
- **\$5** website – **\$7** at the door

## WEBSITE!!!

**COMING SOON...**  
**(BE ON THE LOOKOUT**  
**ON OUR REMIND/IG)**



# Bake Off Competition details



## Requirements to compete

- **3** Teams, each with **4 people**
  - Decide designated **captain** who is available for communication
- **Each** competitor in a group must pay an **entry fee of \$10**
- Teams must **campaign/advertise** for their team and event
  - Team who brings the most supporters will get an **ADVANTAGE** on the day of!

## Microsoft Form

- Info on team members and captain
- Ingredients list + utensils offered
  - draft plan
- 3 teams will be selected to compete

**More info!**



Winning team  
will receive a  
**special prize!**







# Shirt Design Contest

- **NEW SHIRTS FOR KEY CLUB!!**
- **1 point for a \*good\* design**
- **Submission due by November 30th**





# Point Requirements



## 9th–11th

### Semester

- 4 inside points
- 4 outside points

### Year

- 8 inside points
- 8 outside points

**Total = 16 points**



## 12th

### Semester

- 6 inside points
- 6 outside points

### Year

- 12 inside points
- 12 outside points

**Total = 24 points**







**EXCEL SHEET IS UPDATED!!!**  
**AS OF SATURDAY**



# Website

## Information

- Service Opportunities
- Meeting Dates
- Meeting Slides
- Board Members (+emails)
- Link to check points
- FAQs
- Photo Gallery
- Meeting Reminders

## Link







# Remind/IG

## Remind



Last name A-M  
Code: keyclb26a



Last name N-Z  
Code: keyclb26z

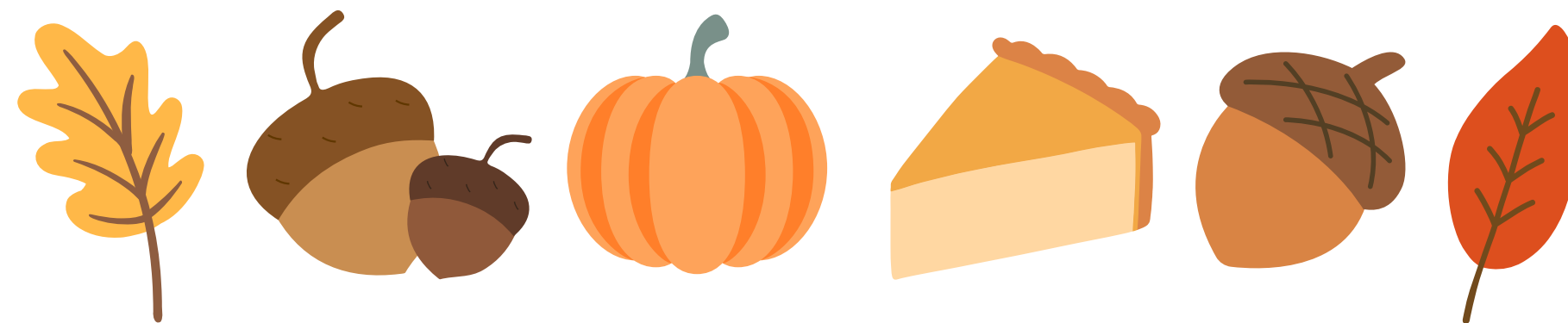
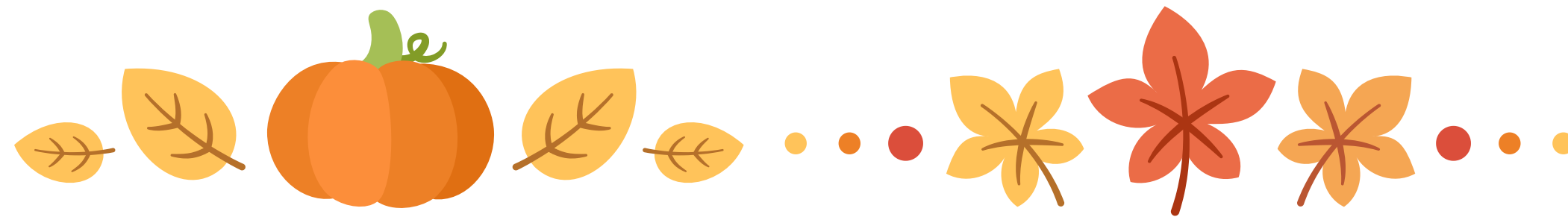
## Instagram

@hsekeyclub





# Attendance







**Thank you  
for a great  
day!**

